



EXTREME WEATHER

CROP LOSS

VOLCANIC & SEISMIC ACTIVITY

ARTICLES

LIVE DATA SETS

CONTACT US

You are here Home » Extreme Weather »

Th

THE "GREAT ARCTIC OUTBREAK OF FEBRUARY 1899" — EXTREME WEATHER, GSM, AND LOW SOLAR ACTIVITY TO BLAME

FEBRUARY 12, 2019 CAP ALLON

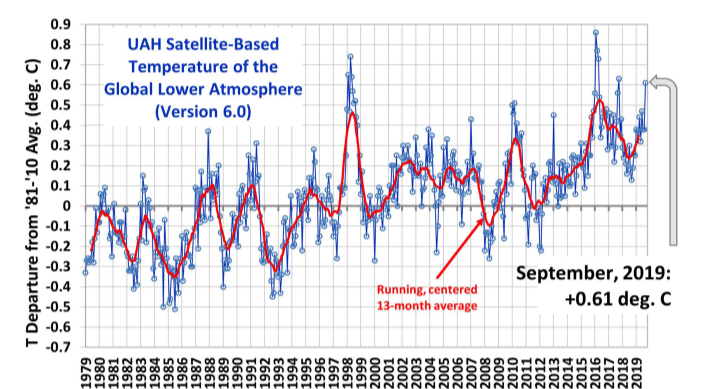
The "Great Arctic Outbreak of February 1899" as it became known, is one of the most widespread North American cold snaps in recorded history. It was described in a 1988 academic article as "a benchmark with which to compare similar events."

The amount of magnetic flux that rises up to the Sun's surface varies within a solar cycle. Near the minimum of the cycle it is rare to see sunspots on the Sun, and the spots that do appear are very small and short-lived. During the maximum there are many sunspots visible.

The strength of each cycle overall also varies.

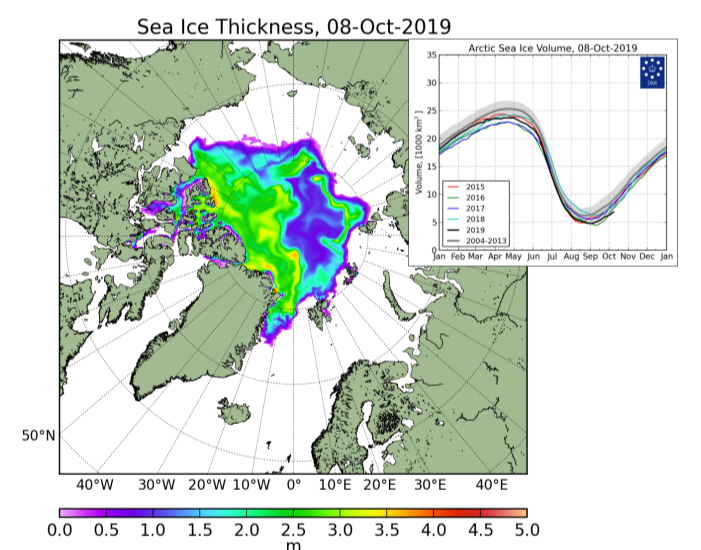
The "Great Arctic Outbreak of February 1899" occurred during the solar minimum between 'weak' solar cycles 13 and 14 — these were the previous comparably weak cycles to the one we've just experienced, cycle 24.

LATEST UAH TEMPERATURE 1979 THRU SEPT 2019 (+0.61C)



DR ROY SPENCER

LATEST ARCTIC SEA ICE THICKNESS



DANISH METEOROLOGICAL INSTITUTE

LATEST GREENLAND ICE SHEET TOTALS



MODETALENTE BIS ZU 45% RABATT Jetzt Shoppen

CLOTHING MONSTER



Buy Now

Research has linked low solar activity with colder temperatures in the lower latitudes (Mikhaël Schwander, et al, 2017) and the sun is currently going through it's deepest solar minimum in well-over 100 years.

The lowest-ever recorded temps in many cities were set during the Great Arctic Outbreak of February 1899, but 2019 has started to oust many of these. I've listed a few below:

- **Feb 8, 2019:** Prince Albert broke a -42.8C record that was set in 1899, with a new record of -44.8.
- **Feb 8, 2019:** -43C tied Williston's, ND all time record low set in 1899.
- **Feb 06, 2019:** In Lansing, Michigan the highest the temp got was 3 degrees, beating the record of 5 degrees from 1899.
- **Jan 31, 2019:** Green Bay tied it's low of -26C from 1899.
- **Jan, 2019:** Milwaukee smashed a daily record that had stood since 1899 by six degrees, with a low of minus -21.

There are many more but you get the picture.

My point is **climate is cyclic, never linear.**

In addition, the recent wild swings in temperatures, from record cold back to warmth (that the AGW camp have pinned as proof of some abnormal CO2-induced flip-flopping), were the norm even back in 1899 — **barely a week after the worst of the cold and snow, temperatures rose into the 70s.**

Looking again at the solar cycles graph above, it's clear we've returned to solar activity similar to that of the late 1800s/early 1900s, and the evidence of a return to the climate of that same period is ever-mounting.

The sun *was, is and always-will-be* the cause of climate change.

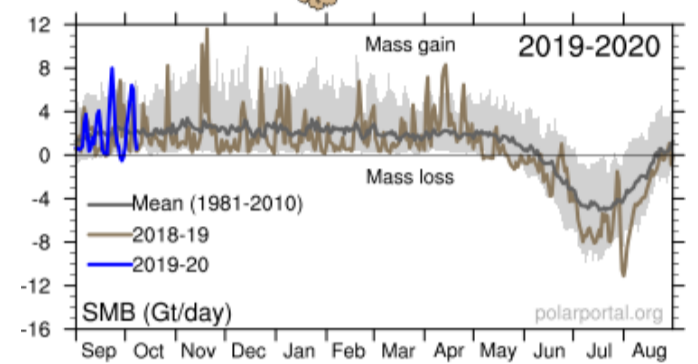
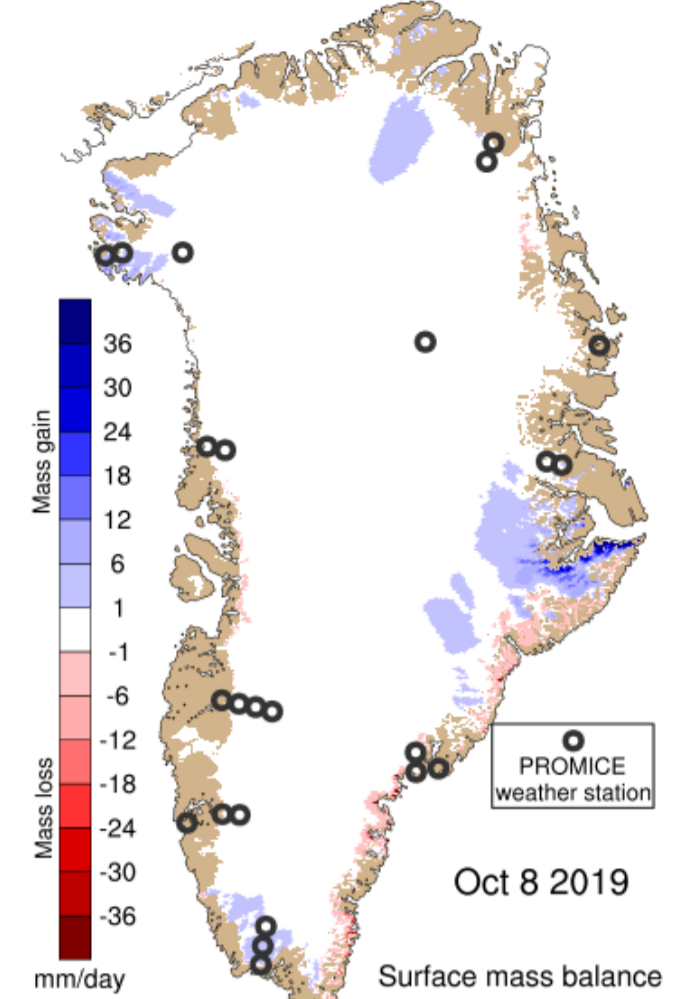
And it's shutting down (relatively).

Prepare for the cold times.

WHAT THE SCIENCE SUGGESTS IS HAPPENING

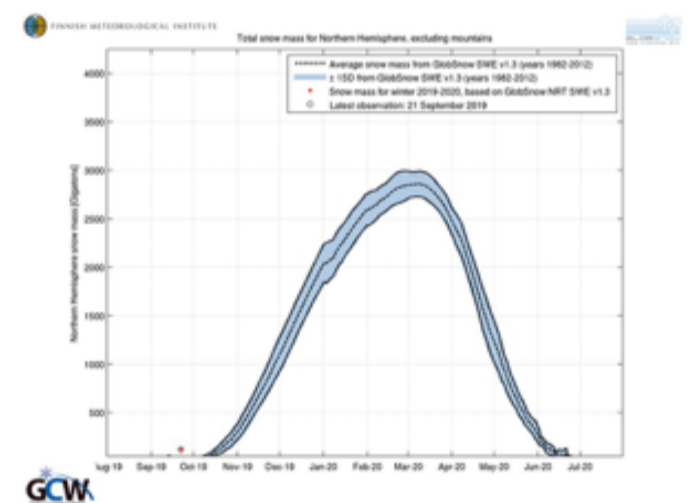
Research shows blocking persistence increases when solar activity is low, causing weather patterns to become locked in place at high and intermediate latitudes for prolonged periods of time.

During a Solar Minimum, the jet stream loses energy. Its usual strong 'Zonal' flow (a west-east direction) reverts to more of a weak and wavy 'Meridional' flow (a north-south direction) — this is exaggerated further during a **Grand Solar Minimum**, like the one we're entering now, and explains why regions become unseasonably hot or cold and others unusually dry or rainy, with the extremes lasting for an extended period of time.



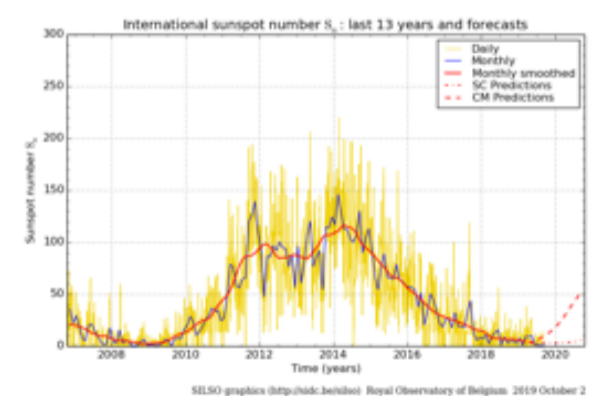
DANISH METEOROLOGICAL INSTITUTE

LATEST NORTHERN HEMISPHERE SNOW MASS TOTALS



FINNISH METEOROLOGICAL INSTITUTE

LATEST SUNSPOT NUMBER THRU SEPT 2019



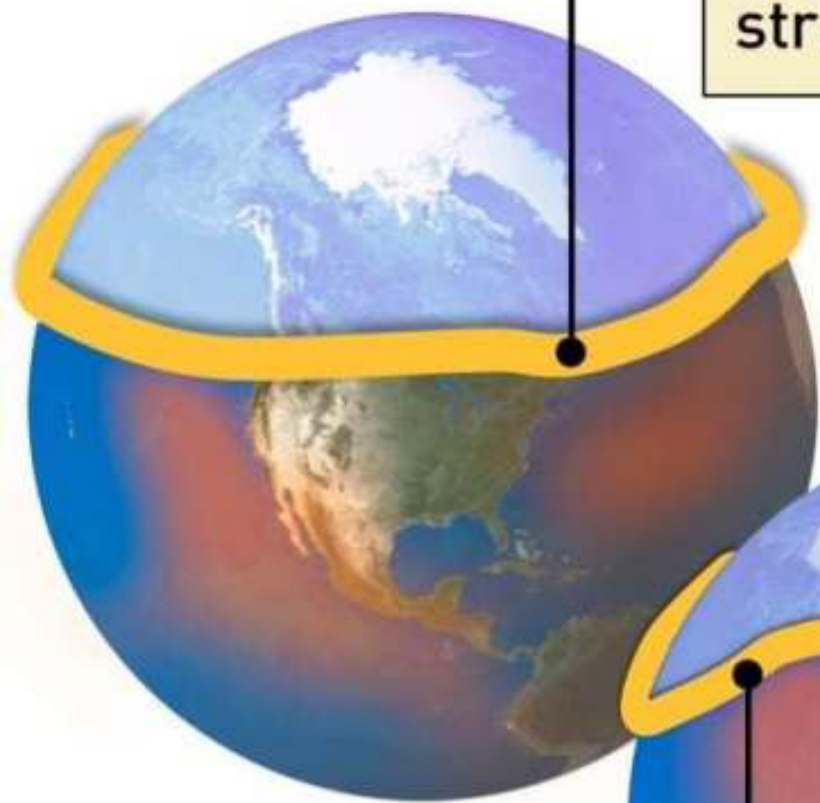
SIDC / SILSO

LIVE SPACE WEATHER OVERVIEW

The Changing Jet Stream

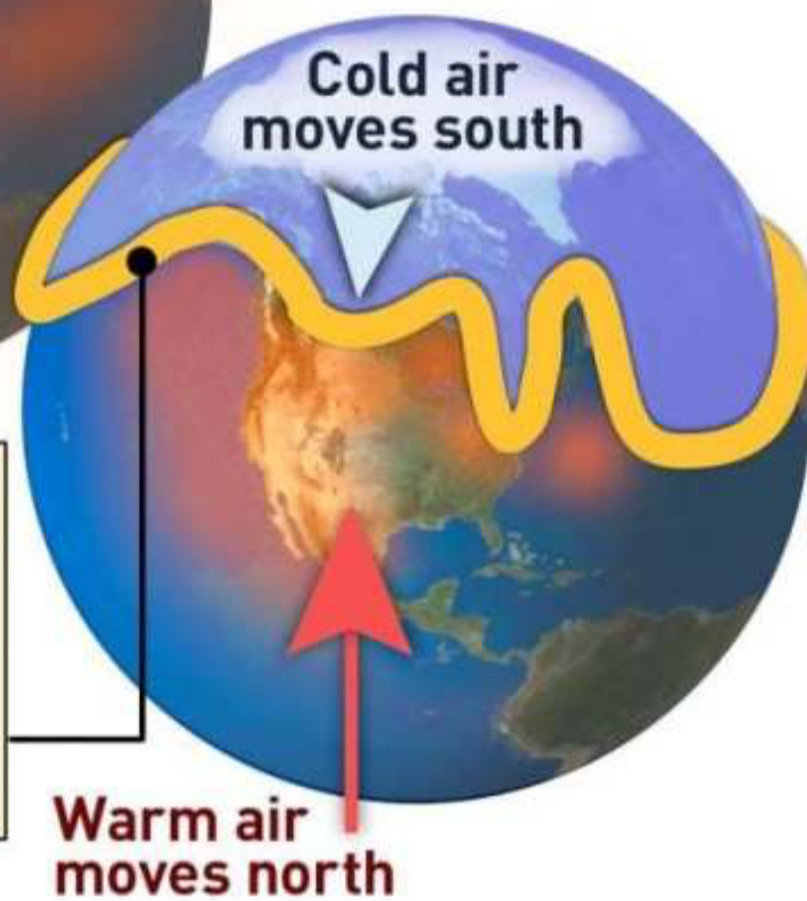
Stable jet stream

A stable jet stream flows on a somewhat straight path.



Wavy jet stream

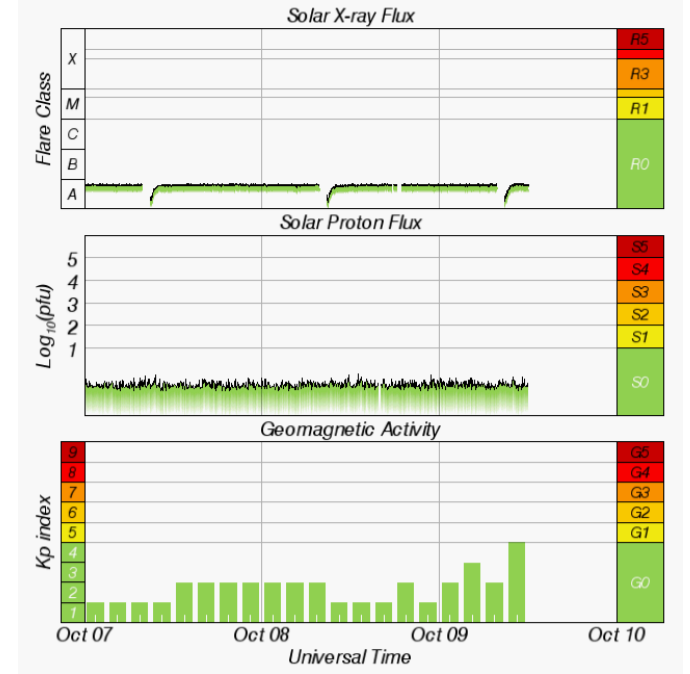
A wavy jet stream allows warm air to move north or colder air to sink deeper south.



Warm air moves north
Cold air moves south

CBC NEWS

SOURCES: NOAA; Scientific American



SWPC / NOAA

SUBSCRIBE TO ELECTROVERSE

Recieve New Post Notifications by Email

Name

Email*

Submit

OCTOBER 09

UK's highest recorded temperature for this day was 27.8C (82F) set at Kensington Palace (London) in 1921.

Climate is cyclic, never linear.

OneTravel

Save up to \$20 Off on Flight Booking

Our Low Fare Promise Over 650+ Airlines

Promo code: **DISCOUNT**

Book Now

Mikhaël Schwander, et al, 2017 — *“The 247-year-long analysis of the 11-year solar cycle impact on late winter European weather patterns suggests a reduction in the occurrence of westerly flow types linked to a reduced mean zonal flow under low solar activity. Based on this observational evidence, we estimate the probability to have cold conditions in winter over Europe to be higher under low solar activity than under high activity.”*

We’ve known the mechanisms for decades, as this article from 1975’s Science Mag would indicate, but as they contradict the modern political Global Warming agenda they’re conveniently forgotten:

TEXAS 'OUT-SNOWING' PARTS OF ALASKA? — ALL PREDICTED DURING A GRAND SOLAR MINIMUM

Back in the fall of 2018, Texas was reported to be 'out-snowing' Fairbanks, Alaska.

The story was twisted by the mainstream and used as yet more evidence of catastrophic AGW, however the phenomenon is exactly the pattern we'd expect to see during a Grand Solar Minimum.

Looking at NASA's own Maunder Minimum Temperature Reconstruction Maps, some regions actually warm during periods of global cooling — the Arctic, North Atlantic and Alaska being the main ones (although 'warm' to the Arctic, for example, is still well-below freezing — there's no melt):

Temp change between 1780 (a year of normal solar activity) and 1680 (a year within the depths of the Maunder Minimum) — NASA



OneTravel
Round Trip Flights Under **\$99**
Call Now 1-888-817-5083
Book Now

\$99 -Round Trip Flights
Our Low Fare Guaranteed for Popular Destinations. Book Now!

CLOTHING MONSTER
Buy Now

And while Alaska may have had a slow start to winter, the Northern Hemisphere as a whole certainly didn't. Total Snow Mass for the NH, excluding the mountains, is comfortably sitting well-above the 30 year average:

Total Snow Mass for NH.

Click [here](#) for more on the Grand Solar Minimum and how an influx of Cosmic Rays contributes to global cooling.

The cold times are returning — **prepare** (and help support *Electroverse*) by becoming a Patron and receive a **FREE Survival Gift**: www.patreon.com/join/electroverse

Social Media channels are actively restricting our reach. Be sure to subscribe to receive new post notifications by email (*the box is located in the sidebar >>> or scroll down if on mobile*).

Help us SPREAD THE GSM MESSAGE so others can survive and thrive in the coming times.

Grand Solar Minimum + Pole Shift

NASA Predicts Next Solar Cycle will be Lowest in 200 Years (Dalton Minimum Levels) + the Implications

NASA is effectively forecasting a return to the Dalton Minimum (1790-1830) but gives no mention of the brutal cold, crop loss, famine, war and powerful Volcanic eruptions associated with it...



Share



« As Exports Increase While Production Falls, Russia Moves to Reassert Control over its Grain Market with New Body

Vancouver Receives 3x its Average Monthly Snowfall in Just 3 Days — With a lot More to Come »

RELATED POSTS

W Crop Loss Extreme
DEG Weather GSM
HAR "SUBSTANTIAL
PRODUCTION CUTS" ON
THE CARDS

📅 OCTOBER 9, 2019

👤 CAP ALLON

The historic forecast drove grain futures to a two month high in trading yesterday, Tues, Oct...

Extreme Weather GSM HERE
SNOW SEASON OFF TO A
MONSTER START —
MORE HISTORIC
ACCUMULATIONS ON THE
WAY

📅 OCTOBER 9, 2019

👤 CAP ALLON

This winter season has begun exactly as predicted. We're only on October 9th, and by the...

Extreme Weather GSM A,
LATVIA RECEIVES ITS
EARLIEST SNOWFALL ON
RECORD

📅 OCTOBER 8, 2019

👤 CAP ALLON

Last year, Liepaja's first snow didn't arrive until Oct 24, while in 2017, it was Oct...



2 THOUGHTS TO "THE "GREAT ARCTIC OUTBREAK OF FEBRUARY 1899" — POLAR VORTEX AND LOW

SOLAR ACTIVITY TO BLAME"

Ric Werme

🕒 February 14, 2019 at 11:55 pm

"this article from 1975's Science Mag"

Science Mag? Never heard of it. The real source is at <https://www.sciencenews.org/sites/default/files/8983>

Reply

Donald Trump Junior

🕒 May 2, 2019 at 10:00 am

Science news used to be science mag in the70's ...duh

Reply

LEAVE A COMMENT

Comment

Notify me of follow-up comments by email.

Notify me of new posts by email.

ADD COMMENT



We Use Custom Ads

We use certain information from your device to personalize your ad experience on the site. Please click Accept All to continue, Update Your Settings to customize, or Reject All to opt out. You may click the Update Privacy Preferences link in the footer at any time to modify your settings.

- > Information that may be used by us or third parties:
- > Purposes for storing information.

Accept All

Update Preferences

[Our Partners](#)

Privacy & Cookies: This site uses cookies. By continuing to use this website, you agree to their use.

\$99 -Round Trip Flights

Our Low Fare Guaranteed for Popular Destinations. Book Now! Onetravel.com

BOOK NOW

